

EQUIPMENT COMMERCIAL VEHICLES MECCANOCAR

- Meccanocar proposes nine modular standard solutions for the preparation of the vans and commercial vehicles.
- Intended Use: electrical, plumbing, installers generally, bodywork and maintenance in general, repairers, roadside assistance, tire dealers, repair shops forklifts.
- The settings allow you to create mobile workshops within each half and to have at hand all the necessary equipment for their work in an orderly and efficient.
- Wide choice of equipment designed to meet the diverse needs of professionals and cover almost all 'of commercial vehicles in circulation.
- Possibility 'to handle even the individual modules that make up the engine blocks to create the right solution for the customer.
- The engine blocks and the individual modules of the kit components are supplied respectively of brackets and small parts for assembly.

Fixing brackets kit for monoblock



- Kit of brackets indicated for the fixing of the monoblock to the van.
- Consisting of four brackets and sixteen steel rivets 4.8 x 16.

Code	Description
4700007345	605 - mounting brackets kit monoblock

Monoblock model 1



- Monoblock model 1.
- High-strength steel structure.
- A wheel arch with retractable aluminum roll.
- Worktop plywood treated anti-oil.
- A chest of drawers composed of three briefcases extractable of which a by H.66 mm equipped with 23 plastic trays managed as spare parts.
- A chest of drawers with three drawers with fixed handles ergonomic, anti-oil and anti-vibration pad.
- Supplied with fixing kit to anchor the structure to the medium, our code 470 00 07345.

Code	Desc.	LxHxP mm	Weight Kg.
4700007300	560	1014 X 986 X 360	72

COMPOSIZIONE

CODICE	DESCRIZIONE	PEZZI
470 00 07385	COPRIPASSARUOTA CON SERRANDA 1.014X483X360 MM	1
470 00 07350	CASSETTIERA DA 507X483X360 MM CON 1 CASSETTO H.200 MM E 2 CASSETTI H.100 MM	1
470 00 07375	CASSETTIERA 507X483X360 MM CON 3 VASSOI, 1 VALIGIA H.66 MM CON 23 VASCHE, 1 VALIGIA H.100 MM VUOTA E 1 VALIGIA H.130 MM VUOTA	1
470 00 07440	PIANA IN LEGNO PER PIANO DI LAVORO 1.014X20X360 MM	1

Monoblock model 2



- Monoblock model 2.
- Particularly suitable for the electricity sector, and plumbing and heating where you need to make space for the transport of bulky material.
- High-strength steel structure.
- A wheel arch with retractable aluminum roll.
- Shelving with 12 dividers, oil resistant and anti-vibration pad.
- Supplied with fixing kit to anchor the structure to the medium, our code 470 00 07345.

Code	Desc.	LxHxP mm	Weight Kg.
4700007305	565	1014 X 1065 X 360	30

COMPOSIZIONE

CODICE	DESCRIZIONE	PEZZI
470 00 07385	COPRIPASSARUOTA CON SERRANDA 1.014X483X360 MM	1
470 00 07410	SCAFFALATURA 1.014X241X360 MM CON 4 DIVISORI	2
470 00 07425	SCAFFALATURA TERMINALE 1.014X100X260 MM CON 4 DIVISORI	1

Monoblock model 3



- Monoblock model 3.
- High-strength steel structure.
- A wheel arch with retractable aluminum roll.
- Worktop plywood treated anti-oil.
- A chest of drawers made of four cases extractable by H 66 mm including two equipped with 23 plastic.
- Two drawers composed of four fixed drawers each, equipped with ergonomic handles, anti-oil and anti-vibration pad.
- Supplied with fixing kit to anchor the structure to the medium, our code 470 00 07345.

Code	Desc.	LxHxP mm	Weight Kg.
4700007310	570	1521 x 986 x 360	135

COMPOSIZIONE

CODICE	DESCRIZIONE	PEZZI
470 00 07395	COPRIPASSARUOTA CON SERRANDA 1.521X483X360 MM	1
470 00 07360	CASSETTIERA DA 507X483X360 MM CON 4 CASSETTI H.100 MM	1
470 00 07355	CASSETTIERA DA 507X483X360 MM CON 1 CASSETTO H.66 MM , 2 CASSETTI H.100 MM E 1 CASSETTO H.130 MM	1
470 00 07380	CASSETTIERA 507X483X360 MM CON 4 VASSOI E 4 VALIGIE H.66 MM DI CUI DUE CON ALL'INTERNO 23 VASCHE	1
470 00 07450	PIANA IN LEGNO PER PIANO DI LAVORO 1.521X20X360 MM	1

Monoblock model 4



- Monoblock model 4.
- Particularly suitable for the electricity sector, and plumbing and heating where you need to make space for the transport of bulky material.
- High-strength steel structure.
- A wheel arch with retractable aluminum roll.
- A dresser with two drawers with fixed handles ergonomic, anti-oil and anti-vibration pad; two cases, one from removable H.66 mm equipped with 23 plastic.
- Shelving with 14 dividers, oil resistant and anti-vibration pad.
- Supplied with fixing kit to anchor the structure to the medium, our code 470 00 07345.

Code	Desc.	LxHxP mm	Weight Kg.
4700007315	575	1521 x 1075 x 360	84

COMPOSIZIONE

CODICE	DESCRIZIONE	PEZZI
470 00 07395	COPRIPASSARUOTA CON SERRANDA 1.521X483X360 MM	1
470 00 07365	CASSETTIERA 507X483X360 MM CON 2 VASSOI, 1 VALIGIA H.66 MM CON 23 VASCHETTE, 1 VALIGIA H.130 MM E 2 CASSETTI H. 66 MM.	1
470 00 07410	SCAFFALATURA 1.014X241X360 MM CON 4 DIVISORI	2
470 00 07435	SCAFFALATURA TERMINALE 1.521X110X360 MM CON 6 DIVISORI	1

Monoblock model 5



- 5-piece model.
- Particularly suitable for the electricity sector, and plumbing and heating where you need to make space for the transport of bulky material.
- High-strength steel structure.
- A wheel arch with retractable aluminum roll.
- Shelving with 15 dividers, oil resistant and anti-vibration pad.
- Supplied with fixing kit to anchor the structure to the medium, our code 470 00 07345.

Code	Desc.	LxHxP mm	Weight Kg.
4700007320	580	1268 x 1075 x 360	38

COMPOSIZIONE

CODICE	DESCRIZIONE	PEZZI
470 00 07390	COPRIPASSARUOTA CON SERRANDA 1.268X483X360 MM	1
470 00 07415	SCAFFALATURA 1.268X241X360 MM CON 5 DIVISORI	2
470 00 07430	SCAFFALATURA TERMINALE 1.268X110X360 MM CON 5 DIVISORI	1

Monoblock model 6



- Monoblock model 6.
- Particularly suitable for the electricity sector, and plumbing and heating where you need to make space for the transport of bulky material.
- High-strength steel structure.
- A wheel arch with retractable aluminum roll.
- A dresser with two drawers with fixed handles ergonomic, anti-oil and anti-vibration pad; two cases, one from removable H.66 mm equipped with 23 plastic.
- Shelving with 11 dividers, oil resistant and anti-vibration pad.
- Supplied with fixing kit to anchor the structure to the medium, our code 470 00 07345.

Code	Desc.	LxHxP mm	Weight Kg.
4700007325	585	1268 x 1075 x 360	75

COMPOSIZIONE

CODICE	DESCRIZIONE	PEZZI
470 00 07390	COPRIPASSARUOTA CON SERRANDA 1.268X483X360 MM	1
470 00 07365	CASSETTIERA 507X483X360 MM CON 2 VASSOI, 1 VALIGIA H.66 MM CON 23 VASCHETTE, 1 VALIGIA H.130 MM E 2 CASSETTI H.66 MM	1
470 00 07405	SCAFFALATURA 760X241X360 MM CON 3 DIVISORI	2
470 00 07430	SCAFFALATURA TERMINALE 1.268X110X360 MM CON 5 DIVISORI	1

Monoblock model 7



- Monoblock model 7.
- Particularly suitable for the electricity sector, and plumbing and heating where you need to make space for the transport of bulky material.
- High-strength steel structure.
- A wheel arch with retractable aluminum roll.
- Shelving with 18 dividers, oil resistant and anti-vibration pad.
- Supplied with fixing kit to anchor the structure to the medium, our code 470 00 07345.

Code	Desc.	LxHxP mm	Weight Kg.
4700007330	590	1521 x 1075 x 360	41

COMPOSIZIONE

CODICE	DESCRIZIONE	PEZZI
470 00 07395	COPRIPASSARUOTA CON SERRANDA 1.521X483X360 MM	1
470 00 07420	SCAFFALATURA 1.521X241X360 MM CON 6 DIVISORI	2
470 00 07435	SCAFFALATURA TERMINALE 1.521X110X360 MM CON 6 DIVISORI	1

Monoblock model 8



- Monoblock model 8.
- Particularly suitable for the electricity sector, and plumbing and heating where you need to make space for the transport of bulky material.
- High-strength steel structure.
- A wheel arch with door swinging.
- Shelving with 12 dividers, oil resistant and anti-vibration pad.
- Supplied with fixing kit to anchor the structure to the medium, our code 470 00 07345.

Code	Desc.	LxHxP mm	Weight Kg.
4700007335	595	1014 x 984 x 360	34

COMPOSIZIONE

CODICE	DESCRIZIONE	PEZZI
470 00 07400	COPRIPASSARUOTA CON ANTINA DI CHIUSURA SCANTONATO 1014X402X360 MM	1
470 00 07410	SCAFFALATURA 1.014X241X360 MM CON 4 DIVISORI	2
470 00 07425	SCAFFALATURA TERMINALE 1.014X100X260 MM CON 4 DIVISORI	1

Monoblock model 9



- Monoblock model 9.
- High-strength steel structure.
- A wheel arch with door swinging.
- A dresser with four drawers with fixed handles ergonomic, anti-oil and anti-vibration pad.
- A dresser with two drawers with fixed handles ergonomic, anti-oil and anti-vibration pad; two cases, one from removable H.66 mm equipped with 23 plastic.
- Shelving with four dividers, oil resistant and anti-vibration pad.
- Supplied with fixing kit to anchor the structure to the medium, our code 470 00 07345.

Code	Desc.	LxHxP mm	Weight Kg.
4700007340	600	1014 x 984 x 360	92

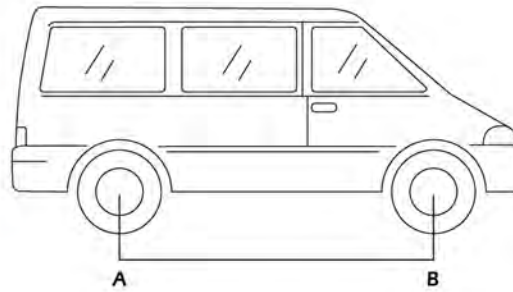
COMPOSIZIONE

CODICE	DESCRIZIONE	PEZZI
470 00 07400	COPRIPASSARUOTA CON ANTINA DI CHIUSURA SCANTONATO 1014X402X360 MM	1
470 00 07355	CASSETTIERA DA 507X483X360 MM CON 1 CASSETTO H.66 MM, 2 CASSETTI H.100 MM E 1 CASSETTO H. 130 MM	1
470 00 07370	CASSETTIERA 507X483X360 MM CON 2 VASSOI, 2 VALIGIE H.66 MM DI CUI UNA DOTATA DI 23 VASCHE E 2 CASSETTI H.100 MM	1
470 00 07425	SCAFFALATURA TERMINALE 1.014X100X260 MM CON 4 DIVISORI	1

TABELLA APPLICAZIONI MONOBLOCCHI



esempio allestimento



A

B



passaruota

		1014x483		1014x483		1521x483		1521x483		1268x483		1268x483		1521x483		1014x402		1014x402	
		MON.1 470 00 07300		MON.2 470 00 07305		MON.3 470 00 07310		MON.4 470 00 07315		MON.5 470 00 07320		MON.6 470 00 07325		MON.7 470 00 07330		MON.8 470 00 07335		MON.9 470 00 07340	
MODELLO	A - B (MM)	SX	DX	SX	DX	SX	DX	SX	DX	SX	DX	SX	DX	SX	DX	SX	DX	SX	DX
Citroën	BERLINGO	2693		X												X			
	NUOVO BERLINGO	2728		X						X		X				X			
	JUMPY L1	3000	X	X	X	X	X	X	X	X	X	X	X	X	X				
	JUMPY L2	3122	X	X	X	X	X	X	X	X	X	X	X	X	X				
	JUMPER L1	3000	X	X	X	X	X	X	X	X	X	X	X	X	X				
	JUMPER L2	3450	X	X	X	X	X	X	X	X	X	X	X	X	X				
	JUMPER L3	4035	X	X	X	X	X	X	X	X	X	X	X	X	X				
	JUMPER L4	4035	X	X	X	X	X	X	X	X	X	X	X	X	X				

		MON.1 470 00 07300		MON.2 470 00 07305		MON.3 470 00 07310		MON.4 470 00 07315		MON.5 470 00 07320		MON.6 470 00 07325		MON.7 470 00 07330		MON.8 470 00 07335		MON.9 470 00 07340	
MODELLO	A - B (MM)	SX	DX	SX	DX	SX	DX	SX	DX	SX	DX	SX	DX	SX	DX	SX	DX	SX	DX
Fiat	DOBLO'	2583	X		X					X		X		X					
	DOBLO'	2963	X	X	X	X	X	X	X	X	X	X	X	X	X				
	SCUDO	3000	X	X	X	X	X	X	X	X	X	X	X	X	X				
	SCUDO	3122	X	X	X	X	X	X	X	X	X	X	X	X	X				
	DUCATO	3000	X	X	X	X	X	X	X	X	X	X	X	X	X				
	DUCATO	3450	X	X	X	X	X	X	X	X	X	X	X	X	X				
	DUCATO	4035	X	X	X	X	X	X	X	X	X	X	X	X	X				
	DUCATO	4035 XL	X	X	X	X	X	X	X	X	X	X	X	X	X				

		MON.1 470 00 07300		MON.2 470 00 07305		MON.3 470 00 07310		MON.4 470 00 07315		MON.5 470 00 07320		MON.6 470 00 07325		MON.7 470 00 07330		MON.8 470 00 07335		MON.9 470 00 07340	
MODELLO	A - B (MM)	SX	DX	SX	DX	SX	DX	SX	DX	SX	DX	SX	DX	SX	DX	SX	DX	SX	DX
Ford	CONNECT	2664	X		X					X		X		X		X			
	CONNECT	2912	X		X			X		X		X		X		X			
	TRANSIT	2933	X	X	X	X	X	X	X	X	X	X	X	X	X				
	TRANSIT	3300	X	X	X	X	X	X	X	X	X	X	X	X	X				
	TRANSIT	3750	X	X	X	X	X	X	X	X	X	X	X	X	X				
	TRANSIT JUMBO	3750	X	X	X	X	X	X	X	X	X	X	X	X	X				

		MON.1 470 00 07300		MON.2 470 00 07305		MON.3 470 00 07310		MON.4 470 00 07315		MON.5 470 00 07320		MON.6 470 00 07325		MON.7 470 00 07330		MON.8 470 00 07335		MON.9 470 00 07340	
MODELLO	A - B (MM)	SX	DX	SX	DX	SX	DX	SX	DX	SX	DX	SX	DX	SX	DX	SX	DX	SX	DX
Mercedes	VITO COMPACT	3200	X	X	X	X	X	X	X	X	X	X	X	X	X	X	X	X	X
	VITO COMPACT LONG	3430	X	X	X	X	X	X	X	X	X	X	X	X	X	X	X	X	X
	VITO EXTRA LONG	3430	X	X	X	X	X	X	X	X	X	X	X	X	X	X	X	X	X
	SPRINTER	3000	X	X	X	X	X	X	X	X	X	X	X	X	X	X	X	X	X
	SPRINTER	3550	X	X	X	X	X	X	X	X	X	X	X	X	X	X	X	X	X
	SPRINTER	4025	X	X	X	X	X	X	X	X	X	X	X	X	X	X	X	X	X
	SPRINTER EXTRA LONG	4025	X	X	X	X	X	X	X	X	X	X	X	X	X	X	X	X	X

		1014x483		1014x483		1521x483		1521x483		1268x483		1268x483		1521x483		1014x402		1014x402	
		MON.1 470 00 07300		MON.2 470 00 07305		MON.3 470 00 07310		MON.4 470 00 07315		MON.5 470 00 07320		MON.6 470 00 07325		MON.7 470 00 07330		MON.8 470 00 07335		MON.9 470 00 07340	
MODELLO	A - B (MM)	SX	DX	SX	DX	SX	DX	SX	DX	SX	DX	SX	DX	SX	DX	SX	DX	SX	DX
KUBISTAR KUBISTAR MAXI	2605	X		X								X				X		X	
	2605	X	X	X				X				X				X	X	X	X
PRIMASTAR PRIMASTAR	3098	X	X	X	X	X		X		X		X		X		X	X	X	X
	3498	X	X	X	X	X		X		X	X	X		X		X	X	X	X
INTERSTAR INTERSTAR INTERSTAR	3078	X	X	X	X	X		X		X	X	X		X					
	3578	X	X	X	X	X	X	X		X	X	X	X	X		X	X	X	X
	4078	X	X	X	X	X	X	X	X	X	X	X	X	X	X				

		MON.1 470 00 07300		MON.2 470 00 07305		MON.3 470 00 07310		MON.4 470 00 07315		MON.5 470 00 07320		MON.6 470 00 07325		MON.7 470 00 07330		MON.8 470 00 07335		MON.9 470 00 07340	
MODELLO	A - B (MM)	SX	DX	SX	DX	SX	DX	SX	DX	SX	DX	SX	DX	SX	DX	SX	DX	SX	DX
COMBO	2716	X		X												X		X	
VIVARO VIVARO	3098	X	X	X	X	X		X		X		X		X		X	X	X	X
	3498	X	X	X	X	X		X		X	X	X		X		X	X	X	X
MOVANO MOVANO MOVANO	3078	X	X	X	X	X		X		X	X	X		X					
	3578	X	X	X	X	X	X	X	X	X	X	X	X	X	X				
	4078	X	X	X	X	X	X	X	X	X	X	X	X	X	X				

		MON.1 470 00 07300		MON.2 470 00 07305		MON.3 470 00 07310		MON.4 470 00 07315		MON.5 470 00 07320		MON.6 470 00 07325		MON.7 470 00 07330		MON.8 470 00 07335		MON.9 470 00 07340	
MODELLO	A - B (MM)	SX	DX	SX	DX	SX	DX	SX	DX	SX	DX	SX	DX	SX	DX	SX	DX	SX	DX
RANCH	2693	X		X												X		X	
PARTNER	2728	X		X						X		X				X		X	
EXPERT L1 EXPERT L2	3000	X	X	X	X	X		X		X		X		X					
	3122	X	X	X	X	X		X		X	X	X		X					
BOXER L1 BOXER L2 BOXER L3 BOXER L4	3000	X	X	X	X	X		X		X		X		X					
	3450	X	X	X	X	X	X	X	X	X	X	X	X	X	X				
	4035	X	X	X	X	X	X	X	X	X	X	X	X	X	X	X	X	X	X
	4035	X	X	X	X	X	X	X	X	X	X	X	X	X	X	X	X	X	X

		MON.1 470 00 07300		MON.2 470 00 07305		MON.3 470 00 07310		MON.4 470 00 07315		MON.5 470 00 07320		MON.6 470 00 07325		MON.7 470 00 07330		MON.8 470 00 07335		MON.9 470 00 07340	
MODELLO	A - B (MM)	SX	DX	SX	DX	SX	DX	SX	DX	SX	DX	SX	DX	SX	DX	SX	DX	SX	DX
KANGOO KANGOO MAXI NUOVO KANGOO	2605	X		X								X				X		X	
	2605	X	X	X				X				X		X		X	X	X	X
	2697	X		X												X		X	
NEW TRAFFIC L1 NEW TRAFFIC L2	3098	X	X	X	X	X		X		X		X		X		X	X	X	X
	3498	X	X	X	X	X		X		X	X	X		X		X	X	X	X
MASTER L1 MASTER L2 MASTER L3 MASTER L4	3078	X	X	X	X	X		X		X	X	X		X					
	3578	X	X	X	X	X	X	X		X	X	X	X	X	X				
	4078	X	X	X	X	X	X	X	X	X	X	X	X	X	X	X	X	X	X
	4078	X	X	X	X	X	X	X	X	X	X	X	X	X	X	X	X	X	X

		MON.1 470 00 07300		MON.2 470 00 07305		MON.3 470 00 07310		MON.4 470 00 07315		MON.5 470 00 07320		MON.6 470 00 07325		MON.7 470 00 07330		MON.8 470 00 07335		MON.9 470 00 07340	
MODELLO	A - B (MM)	SX	DX	SX	DX	SX	DX	SX	DX	SX	DX	SX	DX	SX	DX	SX	DX	SX	DX
CADDY CADDY MAXI	2682	X		X						X		X				X		X	
	3002	X		X						X		X				X		X	
TRANSPORTER TRANSPORTER	3000	X	X	X	X	X		X		X		X		X		X	X	X	X
	3400	X	X	X	X	X	X	X		X	X	X	X	X	X	X	X	X	X
CRAFTER CRAFTER CRAFTER CRAFTER EXTRA LONG	3250	X	X	X	X	X		X		X	X	X		X		X	X	X	X
	3665	X	X	X	X	X	X	X	X	X	X	X	X	X	X	X	X	X	X
	4325	X	X	X	X	X	X	X	X	X	X	X	X	X	X	X	X	X	X
	4325	X	X	X	X	X	X	X	X	X	X	X	X	X	X	X	X	X	X

COMPONENTS MODULES

Meccanocar offers the possibility to create a customized design for customers through management of individual modules. To offer a good service to the customer, measure the maximum dimensions of the passage of the wheel (WxHxD) and select the guard indicated for the van.

Having established the correct module, it is possible to achieve the desired development on the basis of the dimensions of the protective casing for the passage of the wheel.

Regarding the total height of the development, it is advisable to carefully measure the vehicle possibly helping with the measurements given in the diagrams of the piece.

Cover wheel with damper



- The wheel cover can mount and align all the modules above it at the same time obtaining practical loading zones.
- Aluminum roll retractable.
- A wheel arch full of small parts for the application on other modules.

Code	Desc.	LxHxP mm	Weight Kg.
4700007385	645	1014 x 483 x 360	11,63
4700007390	650	1268 x 483 x 360	12,69
4700007395	655	1521 x 483 x 360	14,12

Cover wheel housing with door closing notched



- The wheel arch allows you to mount and align all the modules above it at the same time obtaining practical loading zones.
- Antina closing tilting high-strength steel.
- A wheel arch full of small parts for the application on other modules.

Code	Desc.	LxHxP mm	Weight Kg.
4700007400	660	1014 x 402 x 360	9,08

Module 1 drawer H 200 mm and 2 drawers H 100 mm



- Composition: a drawer H.200 mm, two drawers H.100 mm.
- Drawers with double automatic locking system, ergonomic handles, oil resistant mat and antibrazione.
- Drawer full of small parts for the application on other modules.

Code	Description	LxHxP mm	Weight Kg.
4700007350	610 - Module 1 drawer H 200 mm, 2 drawers 100 mm h	507 x 483 x 360	17,75

Module 1 drawer H 66 mm, 2 drawers H 100 mm, 1 drawer 130 mm H



- Composition: a drawer H.66 mm, two drawers H.100 mm, a drawer H 130 mm.
- Drawers with double automatic locking system, ergonomic handles, oil resistant mat and antibrazione.
- Drawer full of small parts for the application on other modules.

Code	Description	LxHxP mm	Weight Kg.
4700007355	615 - Module 1 drawer H 66 mm, 2 drawers H 100 mm, 1 drawer 130 mm H	507 x 483 x 360	19,81

Module with 4 drawers H 100 mm



- Composition: four drawers H.100 mm.
- Drawers with double automatic locking system, ergonomic handles, anti-oil and anti-vibration pad.
- Drawer full of small parts for the application on other modules.

Code	Description	LxHxP mm	Weight Kg.
4700007360	620 - Module with 4 drawers H 100 mm	507 x 483 x 360	19,44

Module 2 drawers H 66 mm, 66 mm H 2 briefcases and H 130 mm



- Composition: two drawers H.66 mm, a briefcase removable empty H.130 mm, a briefcase removable H.66 mm comes with 23 plastic.
- Drawers with double automatic locking system, ergonomic handles, anti-oil and anti-vibration pad.
- Cases made of steel and powder coated polyester for long life, with ergonomic handle and safety lock. Inside the lid is inserted a sponge to seal up the containers during transportation.
- Drawer full of small parts for the application on other modules.

Code	Description	LxHxP mm	Weight Kg.
4700007365	625 - Module with 2 drawers H 66 mm, 130 mm H 1 case, 1 case H 66 mm	507 x 483 x 360	23,97

Module 2 briefcases H 66 mm and 2 drawers H 100 mm



- Composition: 2 removable 66mm cases h, one containing 23 plastic bins, 2 drawers h 100 mm.
- Drawers with automatic double locking system, ergonomic handles, mat protection against oil and vibration.
- Cases made from steel and painted polyester powders for long term provided ergonomic handle and a safety closure. The inside cover contains a sponge to block and protect the containers during transportation.
- Drawer module provided with all the fixing screws for application to the other modules.

Code	Description	LxHxP mm	Weight Kg.
4700007370	630 - Module 2 briefcases H 66 mm, 2 drawers H 100 mm	507 x 483 x 360	25,09

Module 3 Cases H 66 mm, H 100 mm and 130 mm H



- Composition: a briefcase removable H.66 mm comes with 23 plastic trays, a removable briefcase empty H.100 mm and a briefcase removable empty H.130 mm.
- Cases made of steel and powder coated polyester for long life. with an ergonomic handle and safety lock. Inside the lid is inserted a sponge to seal up the containers during transportation.
- Drawer full of small parts for the application on other modules.

Code	Description	LxHxP mm	Weight Kg.
4700007375	635 - Module 3 Cases H 66 mm, H 100 mm and 130 mm H	507 x 483 x 360	26,63

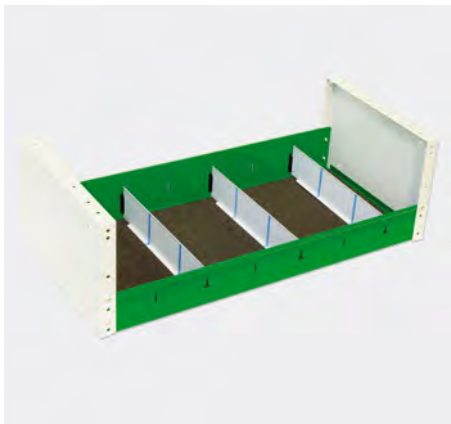
Module 4 Cases H 66 mm



- Composition: four briefcases removable H.66 mm, two of which came with 23 plastic.
- Cases made of steel and powder coated polyester for long life. with an ergonomic handle and safety lock. Inside the lid is inserted a sponge to seal up the containers during transportation.
- Drawer full of small parts for the application on other modules.

Code	Description	LxHxP mm	Weight Kg.
4700007380	640 - Module 4 Cases H 66 mm	507 x 483 x 360	30,72

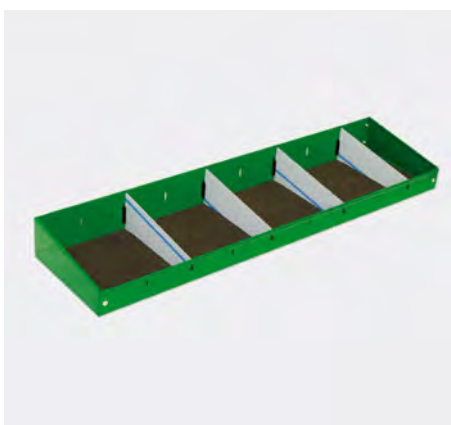
Intermediate Shelves



- Shelves fitted with adjustable partitions, a non-slip mat and anti-vibration
- Supplied in block two pieces already assembled.
- Provided with all the screws for application to the other modules.

Code	Desc.	LxHxP mm	Weight Kg.	Dividers
4700007405	665	760 X 241 X 360	6,91	3
4700007410	670	1014 X 241 X 360	9,57	4
4700007415	675	1268 X 241 X 360	11,13	5
4700007420	680	1521 X 241 X 360	13,03	6

Final Shelves



- Shelves fitted with adjustable partitions, a non-slip mat and anti-vibration.
- Provided with all the screws for application to the other modules.

Code	Desc.	LxHxP mm	Weight Kg.	Dividers
4700007425	685	1014 X 100 X 260	4,59	4
4700007430	690	1268 X 110 X 360	9,41	5
4700007435	695	1521 X 110 X 360	11,31	6

Wooden worktops



- End wooden worktops.
- Wood laminate factories 20mm treats against oil.
- Provided with all the fixing screws for the assembly on the other components.

Code	Desc.	LxHxP mm	Weight Kg.
4700007440	700	1014 X 20 X 360	3,43
4700007445	705	1268 X 20 X 360	4,29
4700007450	710	1521 X 20 X 360	5,13

Toggle clamp holder



- Étauà latch holder provided with a device consists of a gas piston and a quick release system.
- Varnished steel manufactures powders for optimal resistance.
- Allows the operator to have, in the van, a bench vise on any door without having the support of the development.
- Compatible with our étaus a steel bench code 443 00 34450-443 00 34470-443 00 34 500.
- Length of the work plan (open): 891 mm.
- Holder clamp supplied with all the fixing screws.

Code	Description	L x H x P mm (closed)	Weight Kg.
4700007455	715 - toggle clamp holder	215 X 930 X 223	12,3

Stands footing to toggle clamp holder



- Stands footing to toggle clamp holder (code 470 00 07 455).
- Varnished steel manufactures powders for optimal resistance.
- Increases the height of the holder clamp to allow the operator to work in an ergonomic position.
- Base with the fixing screws.

Code	Description	LxHxP mm	Weight Kg.
4700007460	720 - heightening base for rocking holder vise	215 X 161 X 223	3,7

Universal roll holder for paper



- Aluminum structure painted in powders.

Code	Description	LxHxP mm	Weight Kg.
4700007465	725 - Holder for universal roll paper	297 X 200 X 154	0,7

A container holder for plastic container



- Aluminum container holder for plastic container of 10 liters.
- Team of a belt to attach the container during transport.
- Compatible with our plastic container of 10 liters code 470 00 07471.

Code	Description	L x P mm (internal)	Weight Kg.
4700007470	730 - Porte container for plastic container of 10 liters	286 X 154	1,5

Plastic canister for liquids



- Plastic container for liquids (capacity 10 liters).
- Equipped with a practical tap adjusts the water outflow.
- Compatible with our container carrier code 470 00 07470.
- Warning: not indicated to contain flammable liquids.

Code	Description
4700007471	731 - Plastic container 10 liters for 730

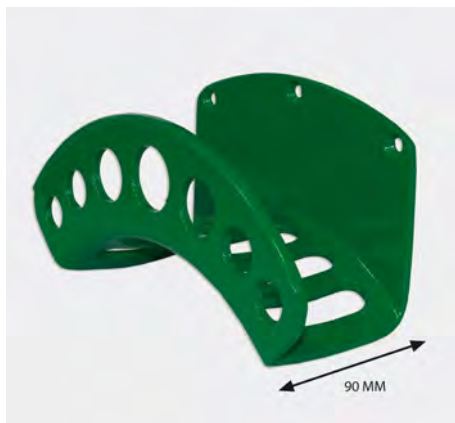
Bar load retaining belt



- Load retaining bar steel.
- It allows to keep anchored to the van every type of load.
- Equipped with nylon strap, length 1500 mm, with tensioning ratchet.
- Bar length: 360 mm.
- Max capacity: 4000 kg.

Code	Description	Weight Kg.
4700007475	735 - Load locking bar L 360 MM	1,45

Saddle cable carrier



- Saddle cable carrier made in aluminum, which is supporting cables with a maximum diameter of 90 mm.
- It can be attached to the modules or directly on the van.

Code	Description	Depth mm	Weight Kg.
4700007480	740 - Saddle cable carrier L 260 mm	90	0,52