

Tubeless valves rubber



- General applications in passenger cars and vans.

Code	Desc.	Length mm	Base (mm)	For hole mm
3970002750	27/1 - TR 412	33	19,5	11,3
3970002800	28 - TR 413	43	19,5	11,3
3970002900	29 - TR 414	49	19,5	11,3
3970000100	1 - TR 414 L	56,5	19,5	11,3
3970000200	2 - TR 415	43	23,5	15,7
3970003000	30 - TR 418	61	19,5	11,3
3970003010	30/1 - TR 423	74	19,5	11,3
3970003020	30/2 - TR 425	60	23,5	15,7

Tubeless valves rubber chrome



- Mounted on alloy wheels and rims where the valve remains in full view.

Code	Desc.	Length mm	Base (mm)	For hole mm
3970000350	3/1 - TR 412 C	33	19,5	11,3
3970000400	4 - TR 413 C	42,5	19,5	11,3
3970000500	5 - TR 414 C	49	19,5	11,3
3970000700	7 - TR 418 C	61,5	19,5	11,3

Valves HP-high pressure for commercial vehicles



- HP = high pressure valves.
- For commercial vehicles, caravans, trailers, SUVs and vans.
- Pressure up to 6.9 bar.

Code	Desc.	Length mm	For hole mm
3970016140	TR600HP	44	11,3
3970016150	TR602HP	63	11,3

Tubeless valves for motorcycles



- Aluminum valve 80 ° bent.

Code	Desc.	Length mm	For hole mm
3970000800	8	25	8,3
3970000810	8/11	25	11,3



- Rubber valve.

Code	Desc.	Length mm	For hole mm
3970000900	9 - TR 438	40,5	8,8

Valve for scooters



- Valve bent 90 °.

Code	Desc.	Length mm	Lean angle	For hole mm
3970001000	10	30	90°	8,3
3970001010	90/30	30	90°	11,3

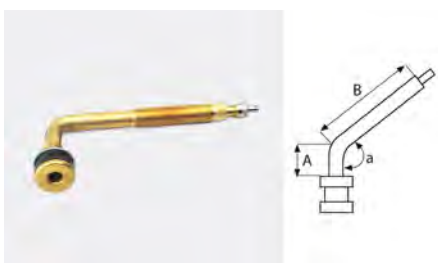
Tubeless valves truck



- Valves 1 curve.

Code	Desc.	A mm	B mm	a
3970007300	73	25	40	27°
3970007400	74	25	50	27°
3970007500	75	25	60	27°
3970007600	76	25	85	27°
3970007700	77	30	95	27°
3970007800	78	50	25	27°

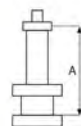
Tubeless valves tractor



- Valves 1 curve.

Code	Desc.	A mm	B mm	a
3970009300	93 - TR 621A	39	54,5	115°
3970009400	94 - TR 622A	44,5	94,5	90°
3970009500	95 - TR 623A	39	36,5	115°

Tubeless valves Civil Engineers



- Straight valves.

Code	Desc.	A mm
3970009800	98 - TRJ 670	41

Reducing valve for Civil Engineers



- Essential for inflating valve Civil Engineers with a common inflator, ie head for autocamion.

Code	Desc.
3970009900	99

Extensions flexible rubber



- For inflating the wheels.

Code	Desc.	Length mm
3970010000	100	140
3970010100	101	180
3970010200	102	210

Extensions in plastic



- Ideal for use with trip valves rubber for vans and commercial vehicles.
- With short design 15 mm.

Code	Desc.	Length mm
3970010300	103	85
3970010400	104	115
3970010500	105	140
3970010600	106	160

Fixing plate single



- Plate to be applied on the wheel rim with slot for housing extension.

Code	Desc.
3970010700	107

Fixing plate double



- Plate to be applied on the rim wheel with slots for housing extensions.

Code	Desc.
3970010800	108

Brass extension at 45 °



- To be mounted on valves facing the wheel rim so with difficult access to the thesis of the inflator.

Code	Desc.
3970010900	109

Universal caps for steel valves and nylon



- Material nylon or steel.
- Available colors nylon: red, green, blue.
- caps chrome for our valves cod. 39700003503970000700.

Code	Desc.	Characteristics
3970001200	12	STEEL CAPS
3970001210	12/1	NYLON BLUE CAPS
3970001220	12/2	NYLON GREEN CAPS
3970001230	12/3	NYLON RED CAPS
3970001240	12/4	CHROME CAPS
3970001300	13	NYLON BLACK CAPS