

Portable plasma cutting machine "Plasma 36"



- Portable electronic machine with built-in compressor plasma cutting of any metal. operation with single phase 220 volts, low power consumption, light weight.
- Ideal for fast and precise cutting of thick metal up to 10 mm. Can be used both in the workshop and on construction sites with motor generators by: body, transformations, machine shops, roadside assistance, road maintenance, blacksmiths, carpenters, builders fixtures, fitters, etc ..
- The machine automatically adjusts the ignition, the function for cutting grinded, full protection against overload. Low power consumption, built-in compressor inside. Clean cut with a thickness up to 10 mm., Separation cut up to 12 mm.
- Built according to the standards EN60974-1, 60974-7 and 60974-10. IP23 protection.

Code	Desc.
4020017430	PEC36

Technical Features	
Weight	16 Kg
Spessore di taglio su acciaio	10 mm
Dimensions	210 X 350 X 460 mm
Norme di costruzione	EN 60974-1 - EN 60974-7 - EN 60974-10
Protection rating	IP23
Fattore di servizio (EN 60974-1)	20%: 30A - 60%: 18A - 100%: 15A
Power supply	220 V - 50 Hz
Potenza assorbita	20%: 3,6 kWA - 60%: 2,1 kWA - 100%: 1,9 kWA
Cutting current	30 A
Separazione massima	12 mm

Nozzle holder with 4 holes - Parts "Plasma Easy Cut 25, 26 and 36"



- Compatibili con torce PT-25C.

Code	Desc.
4020016580	13570

Nozzle diameter 0.65 mm - Parts "Plasma Easy Cut 25, 26 and 36"



- Compatible with torches PT-25C.

Code	Desc.
4020016585	13571

Electrode threaded M5 - Parts "Plasma Easy Cut 25, 26 and 36"



- Compatible with torches PT-25C.

Code	Desc.
4020016590	13572

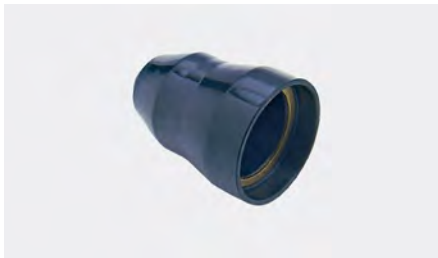
Diffuser insulation - Parts "Plasma Easy Cut 25, 26 and 36"



- Compatible with torches PT-25C.

Code	Desc.
4020016595	13573

Nozzle holder - Parts inverter plasma cutting 35/P



- Ground Engaging parts for plasma cutting inverters Meccanocar 402 00 10900-35 / P.

Code	Desc.
4020013400	13220

Diffuser insulation - Parts inverter plasma cutting 35 / P



- Ground Engaging parts for plasma cutting inverters Meccanocar 402 00 10900-35 / P.

Code	Desc.
4020013600	13240

Protection nozzle holder - Parts inverter plasma cutting 35 / P



- Ground Engaging parts for plasma cutting inverters Meccanocar 402 00 10900-35 / P.

Code	Desc.
4020013800	13260

Ø nozzle 0.8 mm - Parts inverter plasma cutting 35 / P



- Ground Engaging parts for plasma cutting inverters Meccanocar 402 00 10900-35 / P.

Code	Desc.
4020013500	13230

Electrode - Parts inverter plasma cutting 35 / P



- Ground Engaging parts for plasma cutting inverters Meccanocar 402 00 10900-35 / P.

Code	Desc.
4020013700	13250