

Tough inserts for hard metals such as tin, iron, metal in general, with attack by 1 / 4-5 / 16 and 3/8.

Inserts: thanks to their profiles with precise geometries and their perfect concentricity, inserts Meccanocar ensure safe working and a long service life of the tool. The composition of the steel content in the inserts is Meccanocar tenacious hard. Meccanocar inserts are designed for use in industry and trade. Allow to transmit high torques and last long.

Hexagon bits 1/4" (6.35)



- Imprint screwdriver.
- UNI ISO 2351.

Code	Desc.	Ø x spess. mm	L mm
4430025100	317-3	3x0,5	25
4430025110	317-4	4x0,6	25
4430025130	317-5	5x0,8	25
4430025150	317-6	6x1	25
4430025170	317-8	8x1,2	25

Hexagonal shank bits 1/4" (6.35)



- Phillips cross recess.
- UNI 7080-72.

Code	Desc.	Imprint n.	L mm
4430025200	318-1	PH1	25
4430025210	318-2	PH2	25
4430025220	318-3	PH3	25

Hexagonal shank bits 1/4" (6.35)



- Pozidriv imprint.

Code	Desc.	Imprint n.	L mm
4430046620	737-1	PZ. 1	25
4430046622	737-2	PZ. 2	25
4430046624	737-3	PZ. 3	25
4430046625	737-4	PZ. 4	32

Hexagonal shank bits 1/4" (6.35)



- Bits 1/4" hexagonal (6.35).
- Cross recess Phillips.
- Tip knurled ACR.
- The tip acr allows a secure grip of the screw avoiding spillage during work.

Code	Desc.	Imprint n.	L mm
4430025230	318-1 ACR	PH 1	25
4430025235	318-2 ACR	PH 2	25

Hexagonal shank bits 1/4" (6.35)



- Hexagonal male.
- UNI-ISO 3109.

Code	Desc.	Measure mm	L mm
4430046676	744-2	2	25
4430046678	744-2,5	2,5	25
4430046680	744-3	3	25
4430046682	744-4	4	25
4430046684	744-5	5	25
4430046686	744-6	6	25
4430046690	744-8	8	25
4430046692	744-10	10	25

Hexagonal shank bits 1/4" (6.35)



Code	Desc.	Imprint n.	L mm
4430046742	749Tx6	Tx6	25
4430046744	749Tx7	Tx7	25
4430046746	749Tx8	Tx8	25
4430046748	749Tx9	Tx9	25
4430046750	749Tx10	Tx10	25
4430046752	749Tx15	Tx15	25
4430046754	749Tx20	Tx20	25
4430046756	749Tx25	Tx25	25
4430046758	749Tx27	Tx27	25
4430046760	749Tx30	Tx30	25
4430046762	749Tx40	Tx40	25
4430046764	749Tx45	Tx45	25
4430046766	749Tx50	Tx50	25

- imprint Torx male.

Hexagonal shank bits 1/4" (6.35)



- Bits Hex attack. 1/4" (6.35).
- Hexagonal with hole.

Code	Desc.	Imprint n.	L mm
4430050860	1025-2	2	25
4430050862	1025-2,5	2,5	25
4430050864	1025-3	3	25
4430050866	1025-4	4	25
4430050868	1025-5	5	25
4430050870	1025-6	6	25

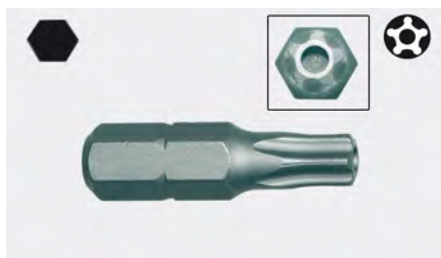
Hexagonal shank bits 1/4" (6.35)



- imprint Torx male with hole.

Code	Desc.	Imprint n.	L mm
4430046770	750Tx10	Tx10	25
4430046772	750Tx15	Tx15	25
4430046774	750Tx20	Tx20	25
4430046776	750Tx25	Tx25	25
4430046778	750Tx27	Tx27	25
4430046780	750Tx30	Tx30	25
4430046782	750Tx40	Tx40	25

Hexagonal shank bits 1/4" (6.35)



- Bits Hex attack. 1/4" (6.35).
- imprint Torx 5-pointed star c / guide hole.

Code	Desc.	Imprint n.	L mm
4770002832	283-TS15	TS15	25
4770002833	283-TS20	TS20	25
4770002834	283-TS25	TS25	25
4770002835	283-TS27	TS27	25
4770002836	283-TS30	TS30	25
4770002837	283-TS40	TS40	25

8

Tips for pneumatic screwdriver 1/4" hexagonal (6.35) with throat



- Phillips cross recess.

Code	Desc.	Imprint n.	L mm
4430046590	734-1	PH 1	50
4430046592	734-2	PH 2	50
4430046594	734-3	PH 3	50
4430046596	734L-1	PH 1	75
4430046598	734L-2	PH 2	75
4430046600	734L-3	PH 3	75

Bits extra long 1/4" hexagonal (6.35) with throat



- Bits 1/4" hexagonal (6.35) with throat.
- For the direct use of pneumatic screwdrivers and wrenches.
- Phillips imprint.
- **Execution milled extra long.**

Code	Desc.	Imprint n.	L mm
4430046603	734 XL-1	PH 1	100
4430046605	734 XL-2	PH 2	100
4430046607	734 XL-3	PH 3	100

Tips for pneumatic screwdrivers Hexagonal shank 1/4" (6.35) with throat imprint Phillips



- For Phillips screws
- For hard metals
- DIN 3126 ISO 1173

Code	Desc.	Imprint n.	L mm
4430057100	851/4 Z-PH1-89	PH1	89 mm
4430057105	851/4 Z-PH1-152	PH1	152 mm
4430057110	851/4 Z-PH2-70	PH2	70 mm
4430057115	851/4 Z-PH2-110	PH2	110 mm
4430057120	851/4 Z-PH2-127	PH2	127 mm
4430057125	851/4 Z-PH2-152	PH2	152 mm
4430057130	851/4 Z-PH3-89	PH3	89 mm
4430057135	851/4 Z-PH3-152	PH3	152 mm

Tips for pneumatic screwdriver 1/4 "hexagonal (6.35) with throat



- Imprint Torx male.

Code	Desc.	Imprint n.	L mm
4430046784	751TX-T10	Tx10	50
4430046786	751TX-T15	Tx15	50
4430046788	751TX-T20	Tx20	50
4430046790	751TX-T25	Tx25	50
4430046792	751TX-T27	Tx27	50
4430046794	751TX-T30	Tx30	50
4430046796	751TX-T40	Tx40	50

Tips for pneumatic screwdriver 1/4 "hexagonal (6.35) with throat



- Imprint Torx male with hole.

Code	Desc.	Imprint n.	L mm
4430046608	735TX-T10	Tx10	50
4430046610	735TX-T15	Tx15	50
4430046612	735TX-T20	Tx20	50
4430046614	735TX-T25	Tx25	50
4430046616	735TX-T27	Tx27	50
4430046618	735TX-T30	Tx30	50
4430046619	735TX-T40	Tx40	50

Bits 1/4" hexagonal (6.35) with throat



Code	Desc.	Imprint n.	L mm
4430050842	1024-2	2	70
4430050844	1024-2,5	2,5	70
4430050846	1024-3	3	70
4430050848	1024-4	4	70
4430050850	1024-5	5	70
4430050852	1024-6	6	70
4430050854	1024-7	7	70
4430050856	1024-8	8	70
4430050858	1024-10	10	70

- Bits 1/4" hexagonal (6.35) with throat.
- For the direct use of pneumatic screwdrivers and wrenches.
- Hexagonal male.
- **Running milled extra long.**

Tips for double pneumatic screwdriver 1/4 "hexagonal (6.35)



- Cross recess Phillips.

Code	Desc.	Imprint n.	L mm
4430011400	217-1	PH 1	75
4430011500	218-2	PH 2	75
4430011600	219-3	PH 3	75

8

Compasses for hex head screws 1/4" (6.35)



- Compasses for direct use of screwdrivers with female coupling 1/4".
- Internal magnet for retaining the screw during work.

Code	Desc.	Mis. chiave	Attachment	L mm
4430044684	509-5,5	5,5	1/4	50
4430044685	509-6	6	1/4	50
4430044686	509-8	8	1/4	50
4430044687	509-7	7	1/4	50
4430044688	509-10	10	1/4	50
4430044689	509-12	12	1/4	50
4430044690	509-13	13	1/4	50

Bits Hexagonal shank 5/16" (7.94)



- Imprint screwdriver.
- UNI-ISO 2351.

Code	Desc.	Ø x spess. mm	L mm
4430025300	319-6	6x1	41
4430025310	319-7	7x1,2	41
4430025320	319-8	8x1,2	41
4430025340	319-10	10x1,6	41
4430025350	319-12	12x2	41

Bits Hexagonal shank 5/16" (7.94)



- Phillips cross recess.
- UNI 7080-72.

Code	Desc.	Imprint n.	L mm
4430025400	320-1	PH 1	35
4430025410	320-2	PH 2	35
4430025420	320-3	PH 3	35
4430025430	320-4	PH 4	35

Bits Hexagonal shank 5/16" (7.94)



- Imprint Torx male.

Code	Desc.	Imprint n.	L mm
4430045430	586-T20	Tx20	35
4430045435	586-T25	Tx25	35
4430045440	586-T27	Tx27	35
4430045445	586-T30	Tx30	35
4430045450	586-T40	Tx40	35
4430045455	586-T45	Tx45	35
4430045460	586-T50	Tx50	35
4430045465	586-T55	Tx55	35

Hexagonal shank bits 3/8" (9,52)



- Hexagonal imprint male.

Code	Desc.	Measure mm	L mm
4430042510	475-4	4	30
4430042520	475-5	5	30
4430042530	475-6	6	30
4430042540	475-7	7	30
4430042550	475-8	8	30
4430042560	475-10	10	30
4430042570	475-12	12	30

Hexagonal shank bits 3/8" (9,52)



- Hexagonal imprint male long.

Code	Desc.	Measure mm	L mm
4430042574	475L-4	4	75
4430042575	475L-5	5	75
4430042580	475L-6	6	75
4430042582	475L-7	7	75
4430042585	475L-8	8	75
4430042590	475L-10	10	75
4430042592	475L-12	12	75



Hexagonal shank bits 3/8" (9,52)



- imprint Torx male.

Code	Desc.	Imprint n.	L mm
4430044400	491-T20	Tx20	30
4430044401	491-T25	Tx25	30
4430044390	491-T27	Tx27	30
4430044402	491-T30	Tx30	30
4430044403	491-T40	Tx40	30
4430044404	491-T45	Tx45	30
4430044405	491-T50	Tx50	30
4430044406	491-T55	Tx55	30

Hexagonal shank bits 3/8" (9,52)



- imprint Torx male long.

Code	Desc.	Imprint n.	L mm
4430044310	491L-T20	Tx20	75
4430044312	491L-T25	Tx25	75
4430044314	491L-T27	Tx27	75
4430044316	491L-T30	Tx30	75
4430044318	491L-T40	Tx40	75
4430044320	491L-T45	Tx45	75
4430044322	491L-T50	Tx50	75
4430044324	491L-T55	Tx55	75

8

Hexagonal shank bits 3/8" (9,52)



- imprint Torx male with hole.

Code	Desc.	Imprint n.	L mm
4430046800	752-T10	Tx10	30
4430046802	752-T15	Tx15	30
4430046804	752-T20	Tx20	30
4430046806	752-T25	Tx25	30
4430046808	752-T27	Tx27	30
4430046810	752-T30	Tx30	30
4430046812	752-T40	Tx40	30
4430046814	752-T45	Tx45	30
4430046816	752-T50	Tx50	30
4430046818	752-T55	Tx55	30

Hexagonal shank bits 3/8" (9,52)



- imprint Torx male with long hole.

Code	Desc.	Imprint n.	L mm
4430046820	753-T10	Tx10	75
4430046821	753-T15	Tx15	75
4430046822	753-T20	Tx20	75
4430046823	753-T25	Tx25	75
4430046824	753-T27	Tx27	75
4430046826	753-T30	Tx30	75
4430046828	753-T40	Tx40	75
4430046830	753-T45	Tx45	75
4430046832	753-T50	Tx50	75
4430046834	753-T55	Tx55	75

Hexagonal shank bits 3/8" (9,52)



- imprint XZN multi grooved.

Code	Desc.	Dimensions mm	L mm
4430044480	499-5	M 5	30
4430044490	499-6	M 6	30
4430044500	499-8	M 8	30
4430044510	499-10	M 10	30
4430044520	499-12	M 12	30

Hexagonal shank bits 3/8 "(9,52)



- imprint multi-grooved XZN long.

Code	Desc.	Dimensions mm	L mm
4430044528	500-5	M 5	75
4430044530	500-6	M 6	75
4430044540	500-8	M 8	75
4430044550	500-10	M 10	75
4430044560	500-12	M 12	75

inserts TIN

- Inserts TIN: special treatment to the titanium nitride. It is a very hard coating that is capable of withstanding continuous therefore very suitable during multiple screw connections.
- With 1/4 "hex.

Hexagonal shank bits 1/4" (6.35)



- Bits 1/4" hexagonal (6.35).
- Cross recess Phillips.
- With protective coating titanium nitride (TIN).
- The tin coating guarantees a greater hardness of bits and therefore a longer life of the tool.

Code	Desc.	Imprint n.	L mm
4430025240	318-1 TIN	PH 1	25
4430025245	318-2 TIN	PH 2	25
4430025250	318-3 TIN	PH 3	25

Hexagonal shank bits 1/4" (6.35)



- Bits 1/4" hexagonal (6.35).
- Cross recess pozidrive.
- With protective coating titanium nitride (TIN).
- The tin coating guarantees a greater hardness of bits and therefore a longer life of the tool.

Code	Desc.	Imprint n.	L mm
4430046630	737-1 TIN	PZ 1	25
4430046632	737-2 TIN	PZ 2	25
4430046634	737-3 TIN	PZ 3	25

Bits 1/4 "hexagonal (6.35) with throat



- Bits 1/4" hexagonal (6.35) with throat.
- For the direct use of pneumatic screwdrivers and wrenches.
- Phillips footprint.
- With protective coating titanium nitride (TIN).
- The tin coating guarantees a greater hardness of bits and therefore a longer life of the tool.

Code	Desc.	Imprint n.	L mm
4430046570	734-1 TIN	PH 1	50
4430046572	734-2 TIN	PH 2	50
4430046574	734-3 TIN	PH 3	50

8

Bits 1/4" hexagonal (6.35) with throat



- Bits 1/4" hexagonal (6.35) with throat.
- For the direct use of pneumatic screwdrivers and wrenches.
- Pozidrive footprint.
- With protective coating titanium nitride (TIN).
- The tin coating guarantees a greater hardness of bits and therefore a longer life of the tool.

Code	Desc.	Imprint n.	L mm
4430046660	741-1 TIN	PZ 1	50
4430046662	741-2 TIN	PZ 2	50
4430046664	741-3 TIN	PZ 3	50

Inserts BTH BITORSION

- Have a torsion zone thermally treated which allows to reduce the hardness of the stem of 20% and increasing the elasticity compared to that of the tip. In this way it prevents at high loads the tip of the insert is damaged, it extends the life of the bit.
- Particularly suitable for mounts multiple and for soft materials such as wood.
- With 1/4" hex.

Inserts BTH BITORSION Hexagonal shank 1/4" (6,35) footprint Phillips



- For Phillips screws
- For soft materials such as wood
- DIN 3126 ISO 1173

Code	Desc.	Imprint n.	L mm
4430057140	851/1 BTH-PH1-25	PH1	25mm
4430057145	851/1 BTH-PH2-25	PH2	25 mm
4430057150	851/1 BTH-PH3-25	PH3	25 mm

Inserts BTH BITORSION Hexagonal shank 1/4" (6,35) footprint Phillips throat



- For Phillips screws
- For soft materials such as wood
- DIN 3126 ISO 1173

Code	Desc.	Imprint n.	L mm
4430057155	851/4 BTH-PH1	PH1-con gola	50 mm
4430057160	851/4 BTH-PH2	PH2-con gola	50 mm
4430057165	851/4 BTH-PH3	PH3-con gola	50 mm

Inserts BTH BITORSION Hexagonal shank 1/4" (6,35) imprint Pozidriv



- Screw Pozidriv
- For soft materials such as wood
- DIN 3126 ISO 1173
- **Specific for wood**

Code	Desc.	Imprint n.	L mm
4430057170	855/1 BTH-PZ1	PZ1	25mm
4430057175	855/1 BTH-PZ2	PZ2	25mm
4430057180	855/1 BTH-PZ3	PZ3	25mm

Inserts BTH BITORSION Hexagonal shank 1/4" (6,35) footprint with Pozidriv throat



- Screw Pozidriv
- For soft materials such as wood
- DIN 3126 ISO 1173

Code	Desc.	Imprint n.	L mm
4430057185	855/4 BTH PZ1	PZ1	50 mm
4430057190	855/4 BTH PZ2	PZ2	50 mm
4430057195	855/4 BTH PZ3	PZ3	50 mm

Inserts in stainless steel

- Using stainless steel inserts, which prevent the formation of rust on the screws or on stainless steel surfaces. Improper rust stainless steel is formed by metal shavings issued by non-stainless steel utensils. They are deposited on the workpiece surface and with the principle of oxidation become rust.
- With 1/4" hex.

Stainless steel inserts Hexagonal shank 1/4" (6.35) for Phillips screws imprint



- For Phillips cross screws
- Metal stainless steel
- With system TORSION
- DIN 3126 ISO 1173

Code	Desc.	Imprint n.	L mm
4430057200	3851/1 TS-PH1	PH1	25 mm
4430057205	3851/1 TS-PH2	PH2	25 mm
4430057210	3851/1 TS-PH3	PH3	25 mm

Stainless steel inserts Hexagonal shank 1/4" (6.35) for screws Pozidriv imprint



- For cross Pozidriv screw
- Metal stainless steel
- With system TORSION
- DIN 3126 ISO 1173

Code	Desc.	Imprint n.	L mm
4430057215	3855/1 TS-PZ1	PZ1	25 mm
4430057220	3855/1 TS-PZ2	PZ2	25 mm
4430057225	3855/1 TS-PZ3	PZ3	25 mm

Stainless steel inserts attack Torx ¼" (6.35) for Torx screws



- For Phillips head screws Torx
- Metal stainless steel
- With system TORSION
- DIN 3126 ISO 1173

Code	Desc.	Imprint n.	L mm
4430057230	3867/1 TS-TX10	Tx10	25 mm
4430057235	3867/1 TS-TX15	Tx15	25 mm
4430057240	3867/1 TS-TX20	Tx20	25 mm
4430057245	3867/1 TS-TX25	Tx25	25 mm
4430057250	3867/1 TS-TX27	Tx27	25 mm
4430057255	3867/1 TS-TX30	Tx30	25 mm
4430057260	3867/1 TS-TX40	Tx40	25 mm

inserts IMPAKTOR

- They are used when it uses an impact wrench or hammer mechanism. These inserts are designed specifically to withstand the high forces of screwdrivers is to impact both percussion and all DIAMOND.
- With ¼" hex.

Inserts IMPAKTOR ¼" (6.35) for hexagon bolts imprint incassato. Specifici for impact wrenches / percussion



- For hexagon socket screws
- DIN 3126 ISO 1173
- For impact wrenches / percussion
- Coated rough diamond on the tip to prevent slippage of the screw tip.

Code	Desc.	Imprint n.	L mm
4430057265	840/1 IMP DC 4	4,00	25 mm
4430057270	840/1 IMP DC 5	5,00	25 mm
4430057275	840/1 IMP DC 6	6,00	25 mm

Inserts IMPAKTOR ¼ "(6.35) for Phillips screws imprint. Specific impact wrenches / percussion



- For Phillips screws
- DIN 3126 ISO 1173
- For impact wrenches / percussion
- Coated rough diamond on the tip to prevent slippage of the screw tip.

Code	Desc.	Imprint n.	L mm
4430057280	851/1 IMP DC PH2	PH2	25 mm
4430057285			

Inserts IMPAKTOR 1/4"(6.35) for Torx screws. Specific impact wrenches / percussion



- For Phillips cross screws
- DIN 3126 ISO 1173
- For impact wrenches / percussion
- Coated rough diamond on the tip to prevent slippage of the screw tip.

Code	Desc.	Imprint n.	L mm
4430057290	867/1 IMP DC TX25	TX25	25 mm
4430057295	867/1 IMP DC TX30	TX30	25 mm
4430057300	867/1 IMP DC TX40	TX40	25 mm

Brings bits 1/4 "hexagonal magnetic



- Screwdriver with 1/4" hexagonal magnetic.
- Bi-material ergonomic handle grip.

Code	Desc.	L mm
4200096351	P.BITS 1/4"	220

Flexible screwdriver bits port 1/4" hexagonal magnetic



- Handle in cellulose acetate.

Code	Desc.	L mm
4770000240	24	250

Brings magnetic bits 1/4 "hexagonal



- Compass.
- Hexagonal with throat.

Code	Desc.	L mm
4430044640	504	75

Brings bits



- Brings adjustable magnetic bits.
- The special ring ensures the seal of the screw in any position.
- The only port bits which guarantees the grip even with bits in shear.

Code	Desc.	Attachment	Length mm
4430050450	996	1/4	58

Brings bits



- Brings bits quick release.
- For releasing the bits you need to move back the ring.

Code	Desc.	Attachment	Length mm
4430050820	1021	1/4	60

Brings bits



- Brings magnetic bits.
- SDS-Plus.
- For hammers with percussion lock.

Code	Desc.	Attachment	Length mm
4430050840	1023	1/4	76

Insert Holder 1/4 long hex 152 mm throat with Screwdriver



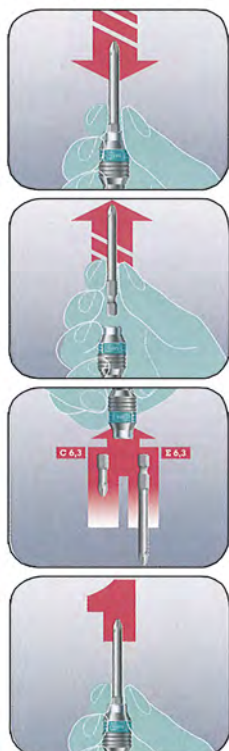
- For Hexagon 1/4" DIN 3126-C 6.3 (ISO 1173)
- With stainless steel body, retaining ring and powerful magnet

Code	Description	Length mm	Ø mm
4430057305	899/4/1 porta bits lungo	152 mm	10,5 mm

Insert Holder 1/4 "quick-change" Rapidaptor "



RAPIDAPTOR



- For Hexagon 1/4 "DIN 3126-C 6.3 and E 6.3 (ISO 1173)
- With handle multicomponent anti-rolling

Code	Description	Length mm
4430057310	813 R-bit holder Rapidaptor	90 mm



Screwdriver stock inserts and powerful magnet



- Per inserti esagonali da ¼" secondo DIN 3126-C 6,3 (ISO 1173)
- Con manico monocomponente anti-rotolamento
- Con potente magnete
- **Contenuto inserti:**
- 1 taglio 5,5x25
- 1 taglio 6,5x25
- 1 croce ph1x25
- 1 croce ph2x25
- 1 pozidriv pz1x25
- 1 pozidriv pz2x25



Code	Description	Lunghezza manico
4430057315	819/1/6-Screwdriver with magnet inserts	120 mm



8

Bit holder ¼" hexagon blade and quick change



- For Hexagon ¼" DIN 3126-C 6.3 and E 6.3 (ISO 1173)
- With handle multicomponent anti-rolling
- With hexagonal blade with hex wrench and door inserts with quick change, powerful magnet

Code	Description	Lunghezza manico	Length blade
4430057320	829/4/1-bit holder Allen	98 mm	120 mm

Adapters for socket wrenches



- Allow the use of all compasses with square.
- Hexagonal with throat 1/4".

Code	Desc.	Attachment <i>esag.</i>	Control panel attachment	Length <i>mm</i>
4430050830	1022-1/4-L50	1/4	1/4	50
4430050832	1022-1/4-L100	1/4	1/4	100
4430050834	1022-3/8-L50	1/4	3/8	50
4430050836	1022-3/8-L100	1/4	3/8	100
4430050838	1022-1/2-L50	1/4	1/2	50

Compasses door bits



- Square drive input.
- Hexagon bits for output.
- * With snap ring for retaining bits.

Code	Desc.	Control panel attachment "	Hexagonal attachment "	L <i>mm</i>
4430046902	761	1/4	1/4	26
4430046904	762	3/8	1/4	31
4430046906	763	3/8	5/16	34
4430046908	764	1/2	5/16	40
4430044570	501	1/2	3/8	36*
4430047806	835	3/8	3/8	36*



Adapter reinforced female square 1/2" - female hexagon 1/4"



- Adapter inserts door reinforced with square for mass swing screwdrivers 1/2" and carries bits hexagonal 1/4". Designed for the use of inserts of screwdrivers with shaft bushings.
- Used on a low power for the screwing of screws swing and tires to ground screwdrivers with any kind of impression, especially in the field of carpentry fittings and fixtures, maintenance, plant, etc...
- Made of burnished steel, with spring-loaded locking sleeve against the bits of the spill.
- **WE RECOMMEND THE USE OF OUR SERIES IMPAKTOR BITS**



Code	Desc.
417RC15900	1204

Insert Kit Torx Star



PARTICOLARE DELLA PUNTA DEL BITS CON IL FORO



MERCEDES (ATEGO, ACTROS)



ESEMPIO DI UTILIZZO SU DEBITMETRO



CORRISPONDENZA DELLE MIS. IN MM

TS10	2,5
TS15	3
TS20	3,5
TS25	4
TS27	4,7
TS30	5,2
TS40	6,2



- Inserts with 5 points with a central hole.
- New impression for safety screws.
- This imprint can be found on screws mounted pumps Bosch, the flow meter alpha 147, Nissan, Peugeot, Rover, Renault and on some vehicles, see: Mercedes Atego, Actros
- Usable with door bits att. hexagonal 1/4 or 1/4 square drive tools and door inserts contained in the kit.
- Particularly suitable for workshops, bodywork, elettrauto etc ..
- **See spare parts list.**

Code	Desc.	Content
4770002830	283	1 PCS. TS10, TS15, TS20, TS25, TS27, TS30, TS40 1 PORTA BITS ATT. 1/4

8

Series hex bits 1/4"



- In a plastic case with transparent lid.

CONTENUTO			
N°1PZ.	PH0x25	N°1PZ.	3x0,5x25
N°1PZ.	PH1x25	N°1PZ.	4x0,6x25
N°1PZ.	PH2x25	N°1PZ.	5x0,8x25
N°1PZ.	PH3x25	N°1PZ.	6x1,0x25
		N°1PZ.	7x1,0x25
N°1PZ.	PZD0x25	N°1PZ.	TX10x25
N°1PZ.	PZD1x25	N°1PZ.	TX15x25
N°1PZ.	PZD2x25	N°1PZ.	TX20x25
N°1PZ.	PZD3x25		
N°1PZ.	Ch.2x25		
N°1PZ.	Ch.3x25		
N°1PZ.	Ch.4x25		
N°1PZ.	Ch.5x25		

Code	Description
4430046880	758 - SERIES 20 PIECES

Brings bits aL "1/4" hexagonal magnetic



- Hexagon with magnet in the long arm - with spring on the short arm.
- Coated cellulose acetate.

Code	Desc.	L mm
4430046840	755	110

Insert Holder 1/4" hexagonal



- Practical door inserts shock-absorbing material.
- With belt clip.
- With docking port bits for our art. 443 443 00 00 46840-755 and 44640-504.

Code	Desc.
4430046838	754

Series bits with bits leads to "L" 1/4 "hexagonal



- Series with case brings bits n / s art. 443 46838-754 and 00-bit port to "L" our art. 443 00 46840-755.

Code	Desc.	Content
4430046846	756 CR	PH0; PH1; PH2; PH3 PZ-1; PZ-2
4430046850	756 ES	Ch. mm2; 2,5; 3; 4; 5; 6
4430046852	756 TX	TX10; TX15; TX20; TX25; TX27; TX30

Series bits with magnetic door bits 1/4 "hexagonal



- Series with case brings bits our art. 443 00 46838 to 754 and brings our art magnetic bits. 443 00 44640-504.

Code	Desc.	Content
4430046870	757 CR	PH0; PH1; PH2; PH3 PZ-1; PZ-2
4430046872	757 ES	Ch. mm2; 2,5; 3; 4; 5; 6
4430046874	757 TX	TX10; TX15; TX20; TX25; TX27; TX30



Assortment compact 1/4" meckompakt 10 pieces



- For Hexagon 1/4" DIN 3126-C 6.3 and E 6.3 (ISO 1173)
- 10 pieces
- **CONTENT:**
- 1 cut 4x25
- 1 cut 5,5x25
- 1 cross ph1x25
- 1 cross ph2x25
- 1 pozidriv pz1x25
- 1 pozidriv pz2x25
- 1 Torx 10x25
- 1 Torx 15x25
- 1 Torx 20x25
- 1 door inserts Rapidaptor

Code	Description
4430057325	Kompakt 10-compact assortment 10 pieces

Assortment 1/4 "32 pieces meckompakt



- For Hexagon 1/4" DIN 3126-C 6.3 and E 6.3 (ISO 1173)
- 32 pieces
- **CONTENT:**
- 1 cut 4x25; 1 cut 5,5x25; 1 cut 6,5x25
- 3 cross ph1x25; 3croce ph2x25; 3 cross ph3x25
- 3 pozidriv pz1x25; 3 pozidriv pz2x25; 3 pozidriv pz3x25
- 1 Torx with hole 10x25; 1 Torx with hole 15x25; 1 Torx with hole 20x25; 1 Torx with hole 25x25; 1 Torx with hole 30x25; 1 Torx with hole 40x25
- 1 hex 4x25; 1 hex 5x25; 1 hex 6x25
- 1 door inserts Rapidaptor
- 1 universal bit holder

Code	Description
4430057330	Kompakt 32-compact assortment 32 pieces

Assortment compact 1/4 "inserted Impaktor screwdrivers 10 pieces



- 10 pieces
- For impact wrenches
- **CONTENT:**
- 1 cut 4x25
- 1 cut 5,0x25
- 1 cross ph2x25
- 1 cross ph3x25
- 1 pozidriv pz2x25
- 1 pozidriv pz3x25
- 1 Torx 25x25
- 1 Torx 30x25
- 1 Torx 40x25
- 1 port bits for Impakt

Code	Description
4430057335	IMP-8740 compact assortment 10 pieces Impakt

Sets 14 bits with hexagonal shank 1/4"



- Colored Bits for a more rapid identification
- Door with magnetic Bits
- With two bits L70 with throat
- In practical folding carton

Code	Description	N. Pieces
4430057520	Kit 14 bits+carry bits 1/4	15

CONTENUTO	
+	1pc. PH1 - 1pc. PH2 - 1pc. PH3
+	1pc. PZ1 - 1pc. PZ2 - 1pc. PZ3
○	1pc. TX15 - 1pc. TX20 - 1pc. TX25
●	1pc. 4,5x0,6 - 1pc. 5,0x0,8 - 1pc. 6,5x1,2
+	1pc. PH2x70mm
+	1pc. PZ2x70mm



Sets 32 bits with hexagonal shank 1/4"



- Colored Bits for a more rapid identification
- Carry with magnetic Bits
- With adapter 1/4+1/4
- With rear belt clip

Code	Description	N. Pieces
4430057530	Kit 32 bits+carry inserts	33

CONTENUTO	
+	1pc. PH1 - 2pcs. PH2 - 1pc. PH3
+	1pc. PZ1 - 2pcs. PZ2 - 1pc. PZ3
●	1pc. 3,0x0,5 - 1pc. 4,0x0,6 - 1pc. 5,5x0,8 - 1pc. 6,0x1,2
○	1pc. 3 - 1pc. 4 - 1pc. 5 - 1pc. 6
○	1pc. TX10 - 1pc. TX15 - 1pc. TX20 - 1pc. TX25 - 1pc. TX27 - 1pc. TX30 - 1pc. TX40
+	1pc. TXH10 - 1pc. TXH15 - 1pc. TXH20 - 1pc. TXH25 - 1pc. TXH27 - 1pc. TXH30 - 1pc. TXH40

portainseriti - bit holder

adattatore 1/4"C - 1/4"C adapter



Deposit skewdriver with accessories 1/4" hexagonal



- With head bent to 90°, also mountable on battery or power tools.
- 45 pieces.

CONTENUTO	
<ul style="list-style-type: none"> • N° 1 TESTA GIREVOLE AD ANGOLO • N° 1 PROLLINGA MAGNETICA 120mm • N° 1 PROLLINGA MAGNETICA 40mm • N° 1 IMPUGNATURA IN ACETATO 	
<ul style="list-style-type: none"> ⊕ IMPRONTA PHILLIPS: 0; 1; 2; 3 ⊖ IMPRONTA CACCIAVITE: 3,2; 4,8; 6,2; 8 ⊗ IMPRONTA TORX: T8; T9; T10; T15; T20; T25 ○ IMPRONTA ESAGONALE: 2-3/32-7/64-3-1/8-9/64-4-3/16-5 ● BUSSOLE TESTA ESAGONALE: 5; 5,5; 6; 1/4; 7; 8; 3/8; 9; 10 	

Code	Description
4770000710	71 - SERIES 45 PIECES

Head parts for Screwdriver



- The head parts, thanks to special gear and particularly strong structure can be used in addition to the version screwdriver, even on electric screwdrivers and battery.
- The special lever adjustable contrast allows you to increase the torque.
- For heavy work and disassembly particular in places difficult to access with a special reference to 90th.
- For our cassette 477 00 00710-71.

Code	Desc.
4770000712	71/2

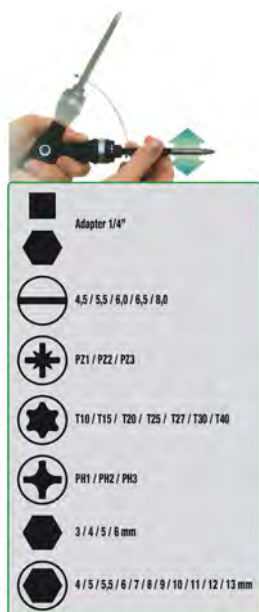
screwdriver Skewdriver



- Screwdriver with tank containing No. 2 bits cut + 2 bits cross att.1 / 4 ".
- Resin head.
- Lever adjustable contrast for an increase in the tightening torque.
- Body only non removable.
- To work in places of difficult access.

Code	Desc.
4770000715	71/5

Cover inserts and sockets 1/4 Grip bits folding door reversible



- Handy case containing 35 pcs.
- The handle can be used both upright and folded, with its ergonomicity 'makes almost' zero effort in screwing and unscrewing.
- Factory car / motorcycle installers.
- "Made in Germany" for a guarantee of quality.

Code	Desc.
4430056100	1622

CONTENUTO DEL KIT:

			Rif.
N°11 BUSSOLE ESAGONALI 1/4"	TIPO N/S ART. 42000	404C	7
N° 5 BITS A LAMA 1/4	TIPO N/S ART.44300	317	2
N° 3 BITS PZ 1/4	TIPO N/S ART.44300	737	3
N° 7 BITS TORX 1/4	TIPO N/S ART. 44300	749TX	4
N° 3 BITS PH 1/4	TIPO N/S ART. 44300	318	5
N° 4 BITS ESAG.1/4	TIPO N/S ART.44300	744	6
N° 1 ADATTATORE 1/4-1/4	ART.4430056110-1622/A		1
N° 1 IMPUGNATURA PIEGHEVOLE ATTACCO 1/4	ART.4430056105-1622/I		

Series hex bits 3/8" with compass port bits. In metal box



- 15 bits 3/8" long 30mm.
- 12 bits 3/8" long 75mm.
- 1 compass leads bits 3/8" Q 2.1".

CONTENUTO
○ ESAGONALI 30mm: 4; 5; 6; 7; 8; 10; 12
○ ESAGONALI 75mm: 5; 6; 8; 10
○ XZN 30mm: 5; 6; 8; 10
○ XZN 75mm: 6; 8; 10; 12
⊗ TORX 30mm: T20; T25; T27; T30; T40; T45; T50; T55
N° 1 BUSSOLA PORTA BITS ATTACCO 1/2"

Code	Description
4430040870	40083 - SERIES 28 PIECES



Series hex bits 3/8" with two compasses port bits. Plastic Housed



- 40 pieces.
- 19 bits 3/8" long 30mm.
- 19 bits 3/8" long 75mm.
- 1 compass leads bits 3/8" Q 3/8".
- 1 compass leads bits 3/8" Q 2.1".

CONTENUTO	
○	ESAGONALI 30mm: 4; 5; 6; 7; 8; 10; 12mm
○	ESAGONALI 75mm: 4; 5; 6; 7; 8; 10; 12mm
○	XZN 30mm: 5; 6; 8; 10; 12
○	XZN 75mm: 5; 6; 8; 10; 12
⊕	TORX 30mm: T20; T25; T30; T40; T45; T50; T55
⊕	TORX 75mm: T20; T25; T30; T40; T45; T50; T55
	N° 1 BUSSOLA PORTA BITS ATTACCO 3/8"
	N° 1 BUSSOLA PORTA BITS ATTACCO 1/2"

Code	Description
4430040877	40087 - SERIES 40 PIECES

Series Torx hex bits 3/8" pilot hole



- 22 pieces.
- 15 bits 3/8" long 30mm.
- 12 bits 3/8" long 75mm.
- 1 compass leads bits 3/8" Q 2.1".
- 1 compass brings bits 3/8" Q 3/8".

CONTENUTO	
⊕	10 BITS ATT. 3/8" L 30: T10; T15; T20; T25; T27; T30; T40; T45; T50; T55
⊕	10 BITS ATT. 3/8" L 75: T10; T15; T20; T25; T27; T30; T40; T45; T50; T55
	N° 1 BUSSOLA PORTA BITS Q 1/2"-ES 3/8"
	N° 1 BUSSOLA PORTA BITS Q 3/8"-ES 3/8"

Code	Description
4430047772	818 - SERIES 22 PIECES